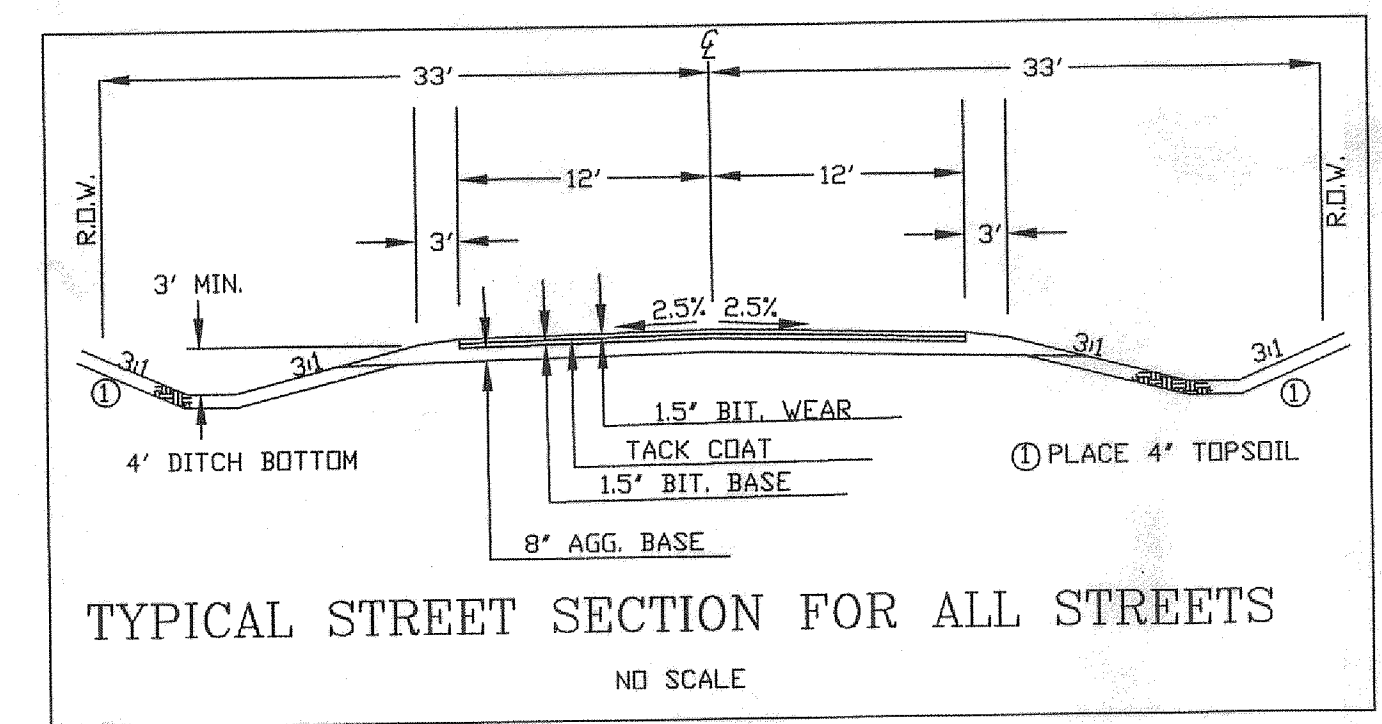
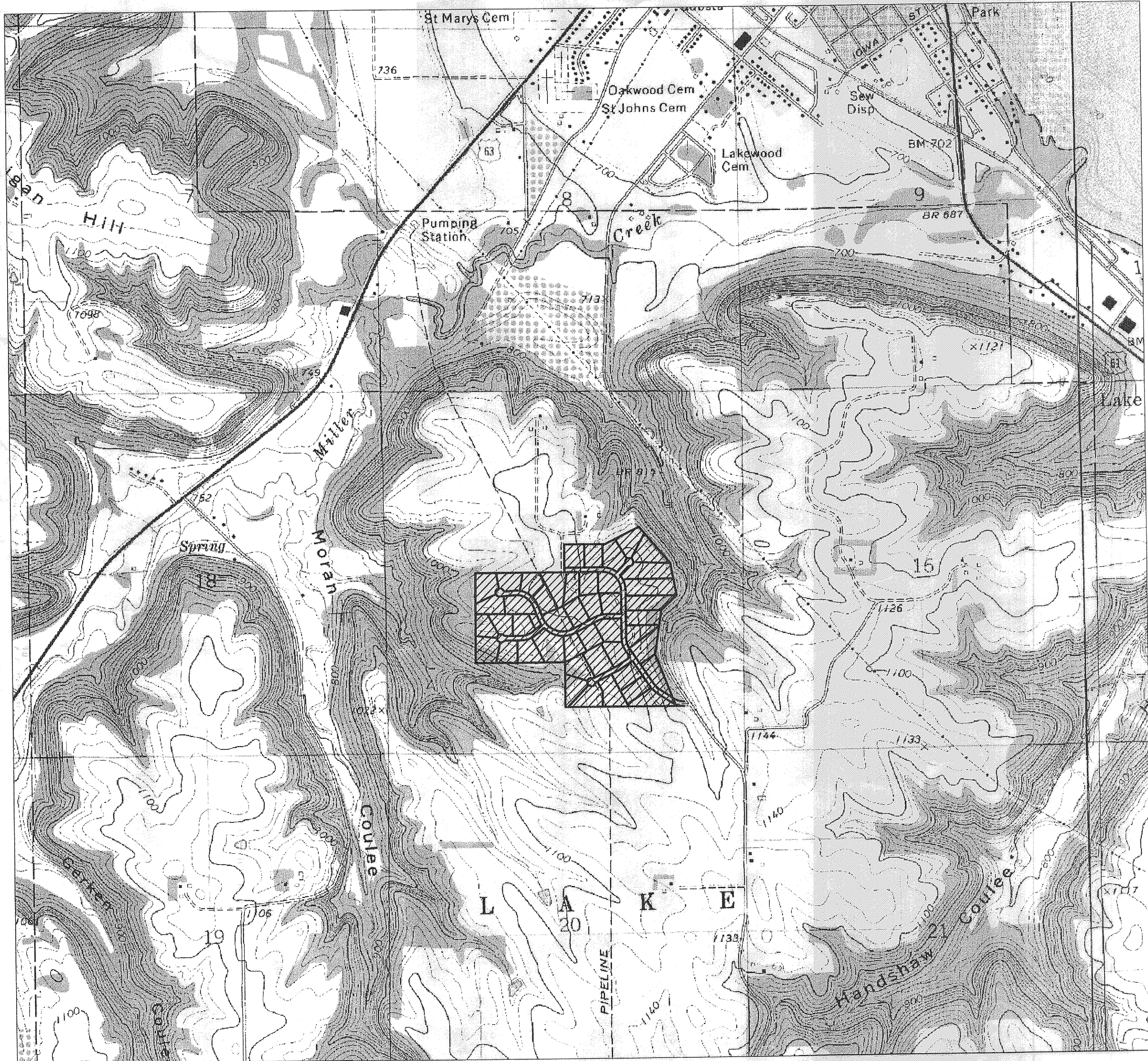


CONSTRUCTION PLANS WINDCLIFF SUBDIVISION LAKE CITY, MINNESOTA

SHEET INDEX	
1	COVER SHEET
2	SITE PLAN (WEST HALF)
3	SITE PLAN (EAST HALF)
4-6	PLAN & PROFILE-WINDCLIFF ROAD
7-8	PLAN & PROFILE-WINDCLIFF TRAIL
9	PLAN & PROFILE-WINDCLIFF LANE
10	PLAN & PROFILE-WINDCLIFF PLACE
11	PLAN & PROFILE-WINDCLIFF COURT
12	STANDARD DETAIL PLATES



LEGEND	
MH	EXISTING MANHOLE
SS	EXISTING SANITARY SEWER
HD	EXISTING HYDRANT
WM	EXISTING WATERMAIN
WS	EXISTING WATER SERVICE & C.S.
SS	EXISTING SAN. SERVICE
GV	EXISTING GATE VALVE
F	EXISTING FENCE
PP	EXISTING POWERPOLE
GW	EXISTING GUIDE WIRE
PT	EXISTING PINE TREE
T	EXISTING TREE
IC	EXISTING CONTOUR
IC	EXISTING INDEX CONTOUR
745	EXISTING CONTOUR ANNOTATION
750	PROPOSED CONTOUR ANNOTATION
IC	PROPOSED CONTOUR
IC	PROPOSED INDEX CONTOUR
MH	PROPOSED MANHOLE
SS	PROPOSED SANITARY SEWER
C.B.	PROPOSED CATCH BASIN
SS	PROPOSED STORM SEWER
WM	PROPOSED WATERMAIN
HYD	PROPOSED HYDRANT
W-1	PROPOSED WATERMAIN NOTE
WS	PROPOSED WATER SERVICE & C.S.
SS	PROPOSED SAN. SERVICE
CS	PROPOSED CURB STOP
DT	PROPOSED DRAIN TILE
UC	PROPOSED UTILITY CONDUIT
SF	PROPOSED SILT FENCE
GV	PROPOSED GATE VALVE

CAUTION
UTILITIES SHOWN ARE APPROXIMATE LOCATIONS, AND THERE MAY BE MORE UNDERGROUND UTILITIES NOT SHOWN. CONTRACTORS ARE REQUIRED TO CALL GOPHER STATE ONE CALL AT 1-800-252-1166 AT LEAST 48 HOURS BEFORE DIGGING.

B.M. TRAVERSE PT. 3105 65.00'± S.W. OF N.E. CORNER OF LOT 23, BLOCK 1. ELEV. = 1090.23

B.M. TRAVERSE PT. 100 430.00'± W. OF C.R. NO. 9 ON LINE OF PLAT. ELEV. = 1104.76

B.M. TRAVERSE PT. 2106 IN LOT 2 BLOCK 2 WINDCLIFF ROAD STA. 42+68.28 90.55'± LT. ELEV. = 1103.49

REVISIONS	DATE

SOUTH EASTERN ENGINEERING INC.
40 10TH ST. S.E. Suite D Rochester, MN 55904
Ph. (507) 287-0110 Fax (507) 286-9188

I HEREBY CERTIFY THAT THE PLANS, SPECIFICATIONS OR REPORTS WERE PREPARED BY ME OR UNDER MY DIRECT SUPERVISION AND THAT I AM A FULLY LICENSED PROFESSIONAL ENGINEER UNDER THE LAWS OF THE STATE OF MINNESOTA.
DATE: 7/27/03 LIC. NO. 28034
STEVEN P. VOIGT

COVER SHEET
WINDCLIFF SUBDIVISION
RODGER & SYLVIA BROWN
LAKE CITY, MINNESOTA

DRAWN: JPP
CHECKED: RAW
DATE: 09/25/03
H SCALE: NO SCALE
V SCALE: NO SCALE
SHEET 1 of 12
PROJ. # 02253

WEST 1/4 CORNER SECTION 17, TOWNSHIP 111N
 RANGE 12W, WABASHA COUNTY, MN.
 FOUND CAST IRON MONUMENT.

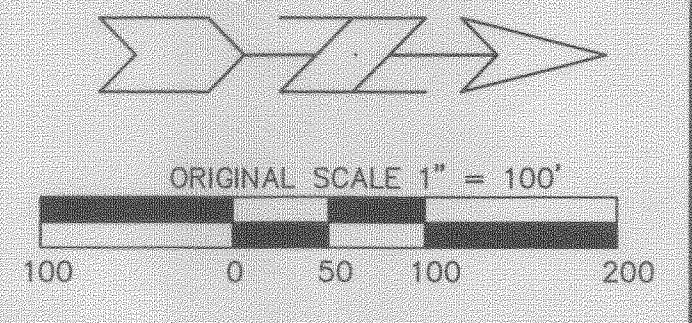
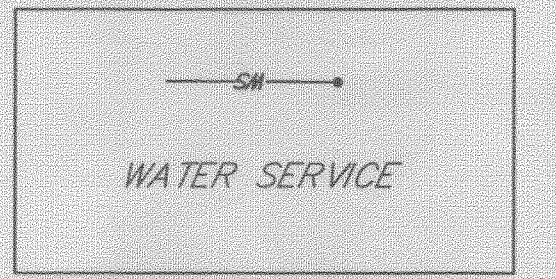
B.M. TRAVERSE PT. 2106 IN LOT 2 BLOCK 2
 WINDCLIFF ROAD STA. 42+68.28 90.55' ± LT.
 ELEV. = 1103.49

B.M. TRAVERSE PT. 3105 65.00' ± S.W. OF
 N.E. CORNER OF LOT 23, BLOCK 1.
 ELEV. = 1090.23

B.M. TRAVERSE PT. 100 430.00' ± W. OF @
 C.R. NO. 9 ON LINE OF PLAT.
 ELEV. = 1104.76

NOTE:
 BLUFF LINE AS AGREED UPON
 BY DAVE JOHNSON OF
 JOHNSON-SCOFIELD SURVEYORS
 AND TRACY POOLER OF WABASHA COUNTY

NOTE:
 BALECHECKS IN ROADWAY DITCHES
 AS REQUIRED BY ENGINEER.



30' BLUFF LINE
 WILL NOT BE SHOWN
 UNLESS SPECIFICALLY
 REQUESTED BY THE COUNTY
 RECORDER'S OFFICE.

BLUFF LINE
 WILL NOT BE SHOWN
 UNLESS SPECIFICALLY
 REQUESTED BY THE COUNTY
 RECORDER'S OFFICE.

SOUTH EASTERN ENGINEERING INC.
 40 16TH ST. S.E. Suite D Rochester, MN 55904
 Ph. (507) 287-0110 Fax (507) 286-9186

UNLESS SPECIFICALLY NOTED THIS PLAN, SPECIFICATIONS, AND NOTES
 WAS PREPARED BY ME OR UNDER MY DIRECT SUPERVISION AND
 I AM A DULY LICENSED PROFESSIONAL ENGINEER UNDER
 THE LAWS OF THE STATE OF MINNESOTA.

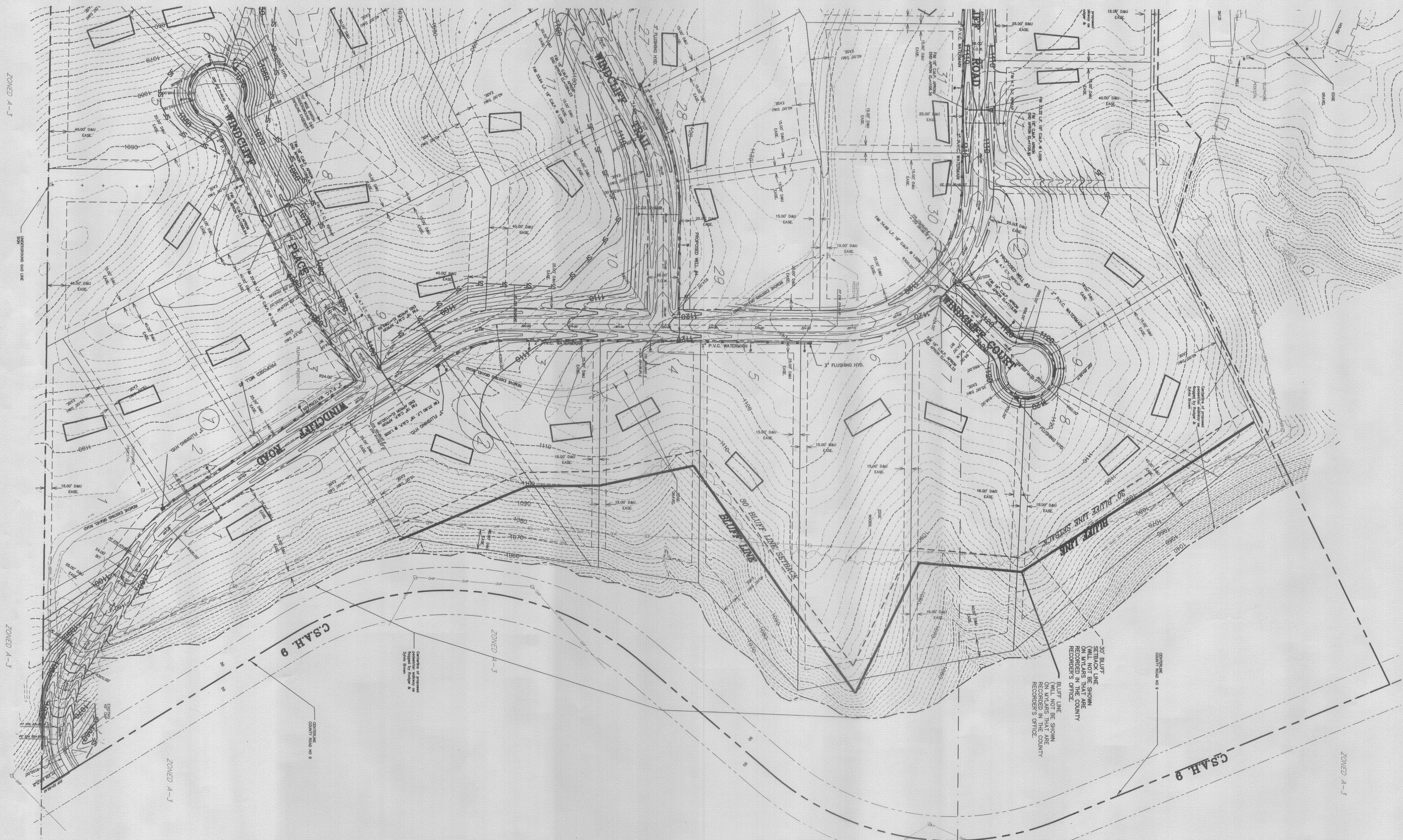
DATE: 2/25/03
 STEVEN P. VOIGT
 200334

**SITE PLAN (WEST HALF)
 WINDCLIFF SUBDIVISION
 RODGER & SYLVIA BROWN
 LAKE CITY, MINNESOTA**

DRAWN: JPP
 CHECKED: RAW
 DATE: 09/25/03
 H SCALE: 1"=100'
 V SCALE:
 SHEET
2 of 12
 PROJ. # 02253



REVISIONS	DATE

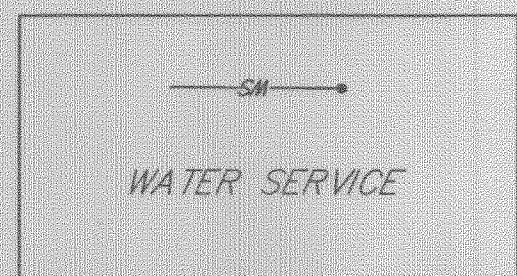


ZONED A-3

ZONED A-3

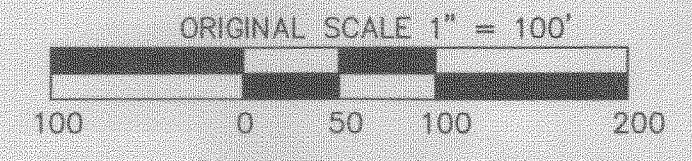
NOTE:
BLUFF LINE AS AGREED UPON
BY DAVE JOHNSON OF
JOHNSON-SCOFIELD SURVEYORS
AND TRACY POOLER OF WABASHA COUNTY

NOTE:
BALECHECKS IN ROADWAY DITCHES
AS REQUIRED BY ENGINEER.

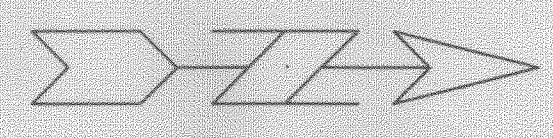


B.M. TRAVERSE PT. 3105 65.00'± S.W. OF
N.E. CORNER OF LOT 23, BLOCK 1.
ELEV. = 1090.23

B.M. TRAVERSE PT. 100 430.00'± W. OF C.
C.R. NO. 9 ON LINE OF PLAT.
ELEV. = 1104.76



B.M. TRAVERSE PT. 2106 IN LOT 2 BLOCK 2
WINDCLIFF ROAD STA. 42+68.28 90.55'± LT.
ELEV. = 1103.49



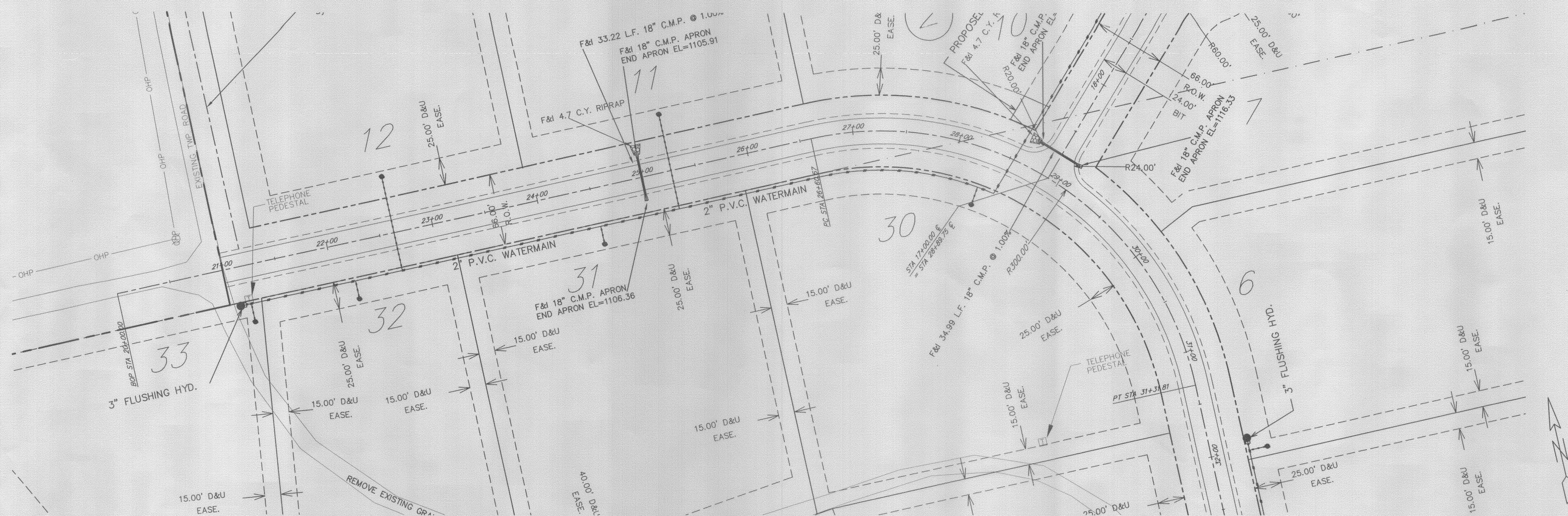
REVISIONS	DATE

SOUTH EASTERN ENGINEERING INC.
40 16TH ST. S.E. Suite D Rochester, MN 55904
Ph. (507) 287-0110 Fax (507) 286-9188

MEMBER: I certify that the plan, specification or report that I am a duly licensed professional engineer under the laws of the state of Minnesota.
Steven P. Voigt
STEVEN P. VOIGT
DATE: 9/29/03 Lic. No. 20034

**SITE PLAN (EAST HALF)
WINDCLIFF SUBDIVISION
RODGER & SYLVIA BROWN
LAKE CITY, MINNESOTA**

DRAWN: JPP
CHECKED: RAW
DATE: 09/25/03
H SCALE: 1"=100'
V SCALE: 1"=100'
SHEET
3 of **13**
PROJ. # 02253

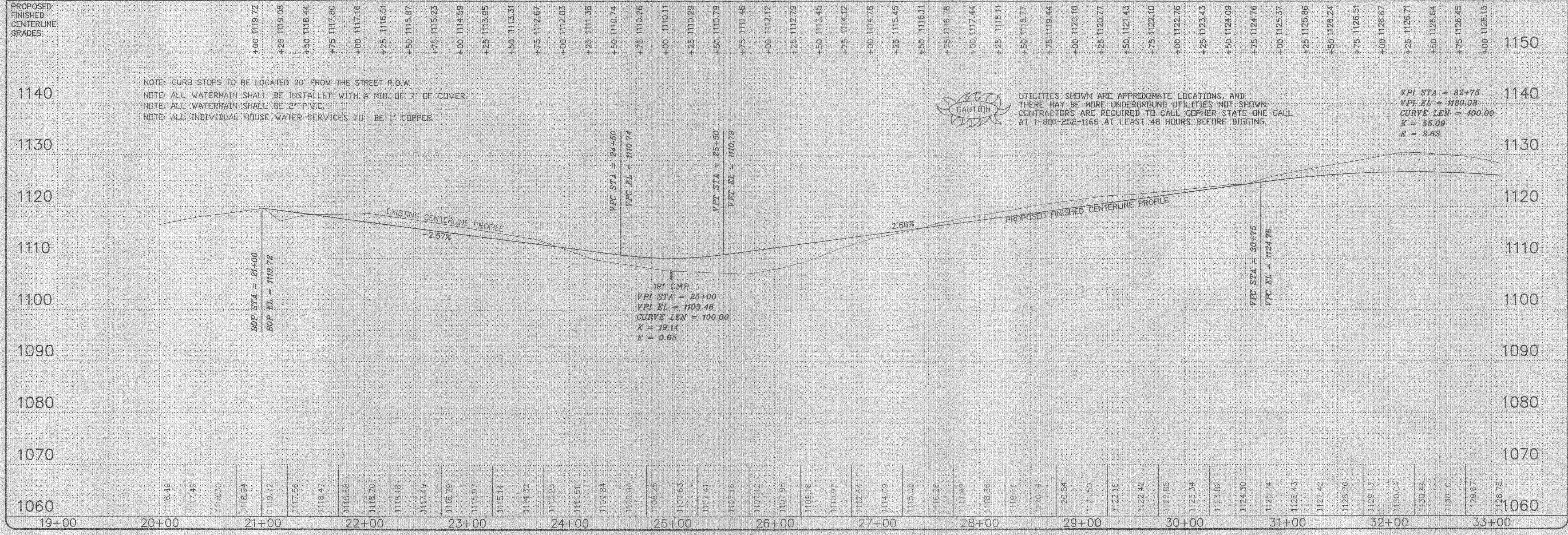
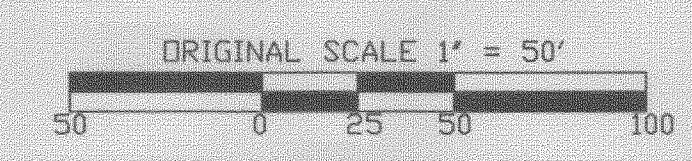


B.M. TRAVERSE PT. 3105 65.00'± S.W. OF N.E. CORNER OF LOT 23, BLOCK 1. ELEV. = 1090.23

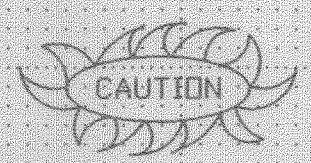
B.M. TRAVERSE PT. 100 430.00'± W. OF C.R. NO. 9 ON LINE OF PLAT. ELEV. = 1104.76

B.M. TRAVERSE PT. 2106 IN LOT 2 BLOCK 2 WINDCLIFF ROAD STA. 42+68.28 90.55'± LT. ELEV. = 1103.49

WINDCLIFF ROAD



NOTE: CURB STOPS TO BE LOCATED 20' FROM THE STREET R.O.W.
 NOTE: ALL WATERMAIN SHALL BE INSTALLED WITH A MIN. OF 7' OF COVER.
 NOTE: ALL WATERMAIN SHALL BE 2\"/>



UTILITIES SHOWN ARE APPROXIMATE LOCATIONS AND THERE MAY BE MORE UNDERGROUND UTILITIES NOT SHOWN. CONTRACTORS ARE REQUIRED TO CALL Gopher State One Call AT 1-800-252-1166 AT LEAST 48 HOURS BEFORE DIGGING.

VPI STA = 32+75
 VPI EL = 1130.08
 CURVE LEN = 400.00
 K = 55.09
 E = 3.63

REVISIONS	DATE

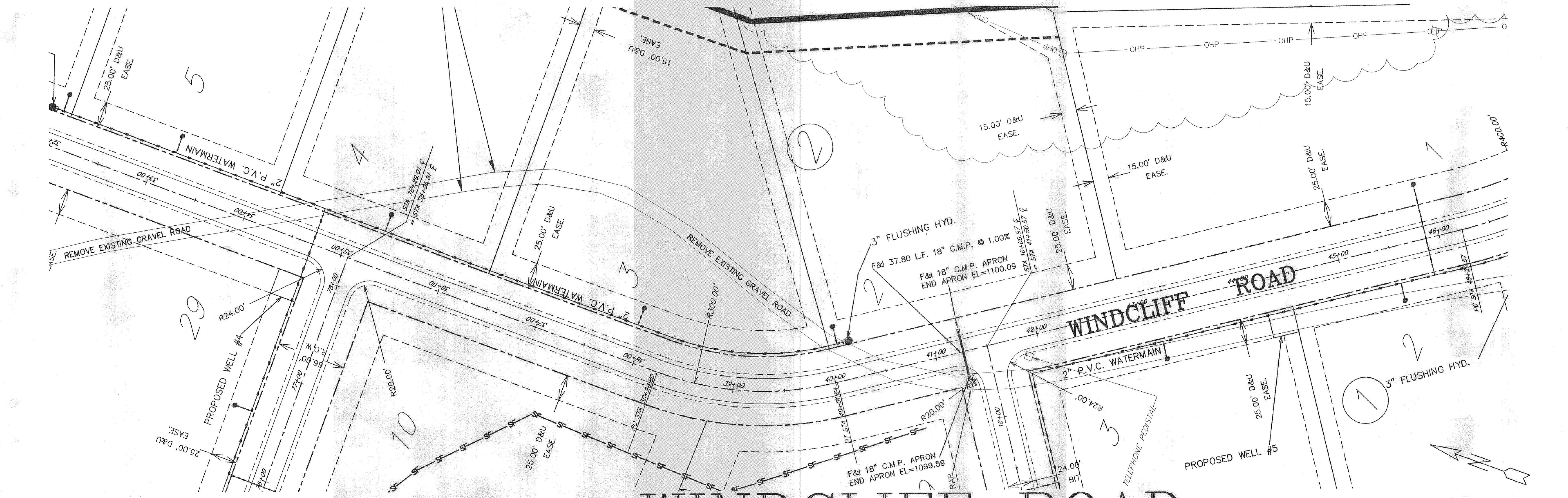
SOUTH EASTERN ENGINEERING INC.
 40 16th St. S.E. Suite D Rochester, MN 55904
 Ph. (507) 287-0110 Fax (507) 286-8188

DESIGNER'S CERTIFICATE THAT THIS PLAN, SPECIFICATIONS OR OTHER WORK PREPARED BY ME OR UNDER MY DIRECT SUPERVISION AND THAT I AM A duly licensed PROFESSIONAL ENGINEER UNDER THE LAWS OF THE STATE OF MINNESOTA.

DATE: 2/25/03
 STEVEN P. VIIGT
 20034

PLAN & PROFILE - WINDCLIFF ROAD
WINDCLIFF SUBDIVISION
RODGER & SYLVIA BROWN
LAKE CITY, MINNESOTA

DRAWN: PP
 CHECKED: RAW
 DATE: 09/25/03
 H SCALE: 1" = 50'
 V SCALE: 1" = 10'
 SHEET
4 of 12
 PROJ. # 02253

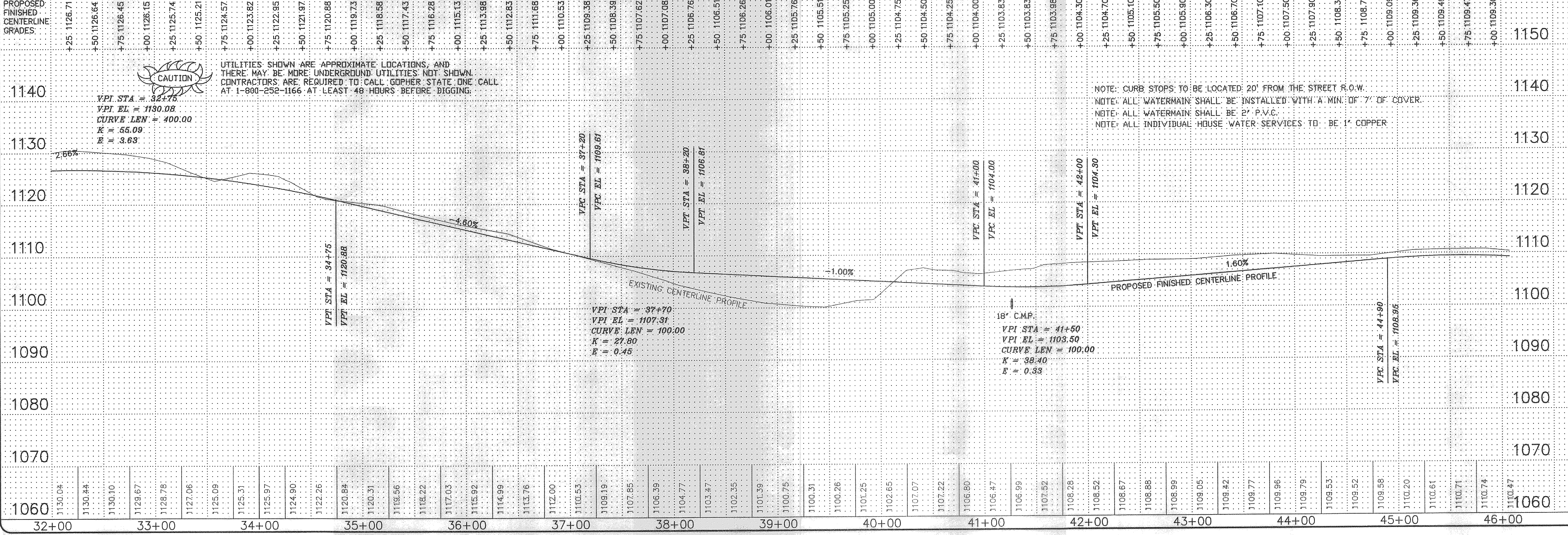
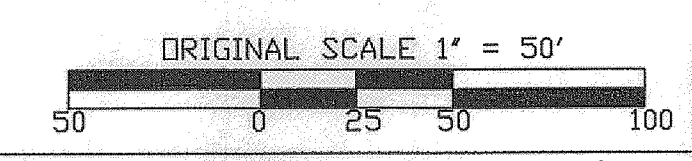


B.M. TRAVERSE PT. 3105 65.00'± S.W. OF N.E. CORNER OF LOT 23, BLOCK 1. ELEV. = 1090.23

B.M. TRAVERSE PT. 100 430.00'± W. OF C. R. NO. 9 ON LINE OF PLAT. ELEV. = 1104.76

B.M. TRAVERSE PT. 2106 IN LOT 2 BLOCK 2 WINDCLIFF ROAD STA. 42+68.28 90.55'± LT. ELEV. = 1103.49

WINDCLIFF ROAD



DATE: _____

REVISIONS: _____

SOUTH EASTERN ENGINEERING INC.
 40 16th St. S.E. Suite D Rochester, MN 55904
 Ph. (507) 287-0110 Fax (507) 286-9188

PLAN & PROFILE - WINDCLIFF ROAD
 WINDCLIFF SUBDIVISION
 RODGER & SYLVIA BROWN
 LAKE CITY, MINNESOTA

DRAWN: JPP
 CHECKED: RAW
 DATE: 09/25/03
 H SCALE: 1"=50'
 V SCALE: 1"=10'
 SHEET: 5 of 12
 PROJ. # 02253

CAUTION
 UTILITIES SHOWN ARE APPROXIMATE LOCATIONS, AND THERE MAY BE MORE UNDERGROUND UTILITIES NOT SHOWN. CONTRACTORS ARE REQUIRED TO CALL GOPHER STATE ONE CALL AT 1-800-252-1166 AT LEAST 48 HOURS BEFORE DIGGING.

NOTE: CURB STOPS TO BE LOCATED 20' FROM THE STREET R.O.W.
 NOTE: ALL WATERMAIN SHALL BE INSTALLED WITH A MIN. OF 7' OF COVER.
 NOTE: ALL WATERMAIN SHALL BE 2" P.V.C.
 NOTE: ALL INDIVIDUAL HOUSE WATER SERVICES TO BE 1" COPPER

18" C.M.P.
 VPI STA = 41+50
 VPI EL = 1103.50
 CURVE LEN = 100.00
 K = 38.40
 B = 0.33

VPI STA = 37+70
 VPI EL = 1107.31
 CURVE LEN = 100.00
 K = 27.80
 B = 0.45

VPI STA = 34+75
 VPI EL = 1120.88

VPI STA = 37+20
 VPI EL = 1109.81

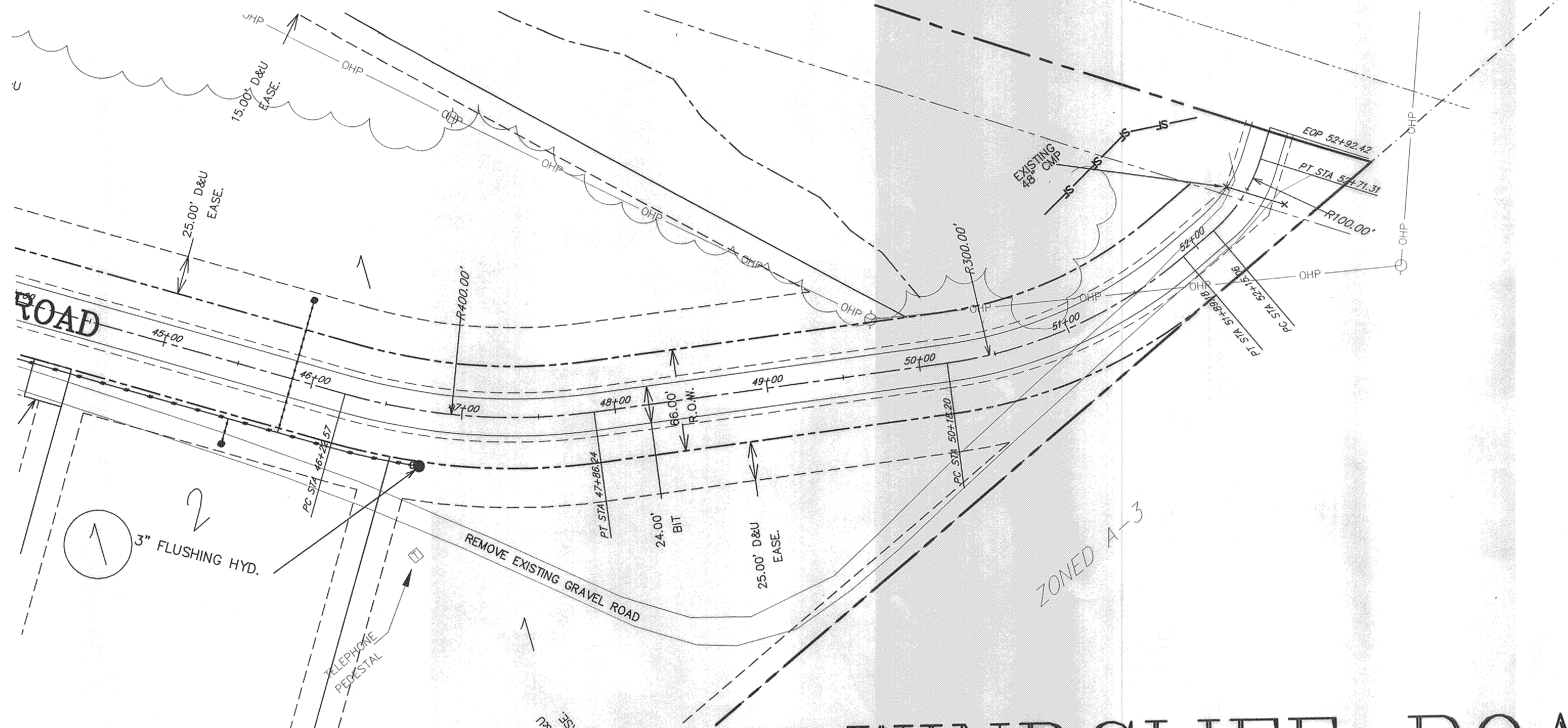
VPI STA = 38+20
 VPI EL = 1106.87

VPI STA = 41+00
 VPI EL = 1104.00

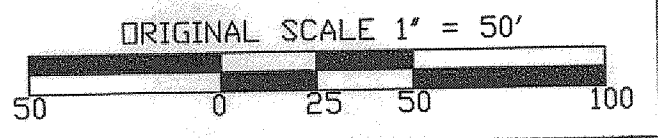
VPI STA = 40+00
 VPI EL = 1104.00

VPI STA = 42+00
 VPI EL = 1104.30

VPI STA = 44+90
 VPI EL = 1109.95



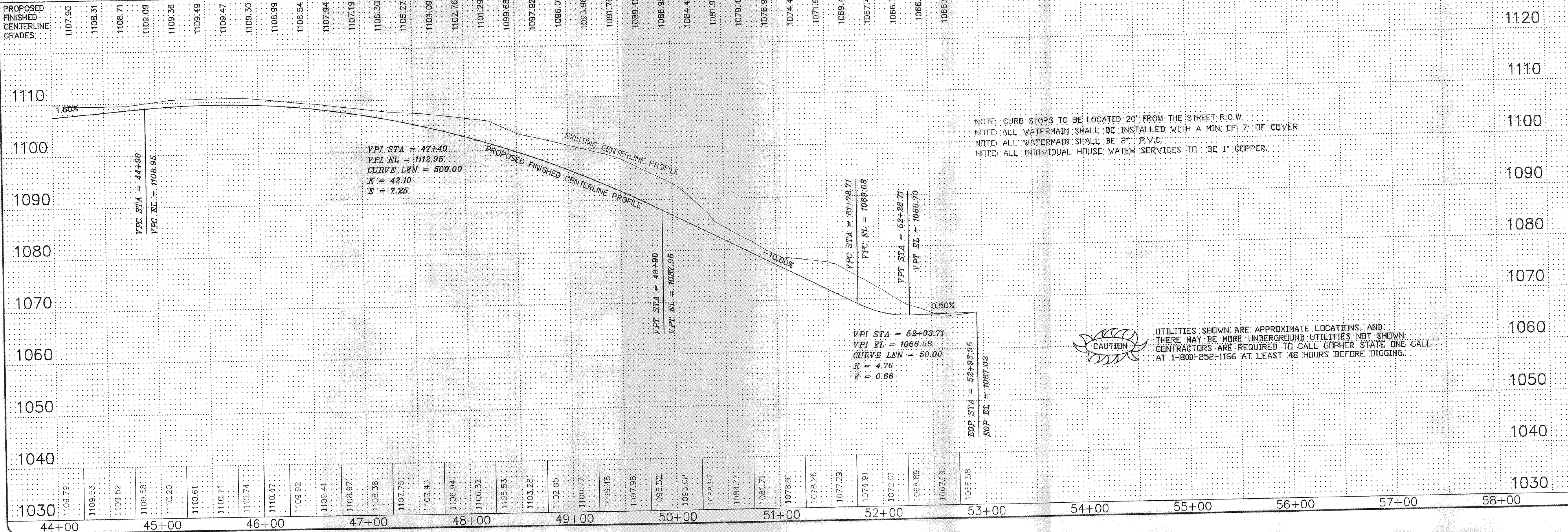
WINDCLIFF ROAD



B.M. TRAVERSE PT. 3105 65.00'± S.W. OF N.E. CORNER OF LOT 23, BLOCK 1. ELEV. = 1090.23

B.M. TRAVERSE PT. 100 430.00'± W. OF C.R. NO. 9 ON LINE OF PLAT. ELEV. = 1104.76

B.M. TRAVERSE PT. 2106 IN LOT 2 BLOCK 2 WINDCLIFF ROAD STA. 42+68.28 90.55'± LT. ELEV. = 1103.49



REVISIONS	DATE

SOUTH EASTERN ENGINEERING INC.
 40 16th St. S.E. Suite D Rochester, MN 55904
 Ph. (507) 287-0110 Fax (507) 286-9188

I HEREBY CERTIFY THAT THIS PLAN, SPECIFICATION OR REPORT WAS PREPARED BY ME OR UNDER MY CLOSE PERSONAL SUPERVISION AND THAT I AM A FULLY LICENSED PROFESSIONAL ENGINEER UNDER THE LAWS OF THE STATE OF MINNESOTA.

Steven P. Vriigt
 STEVEN P. VRIIGT
 LICENSE NO. 20034
 DATE: 7/20/03

PLAN & PROFILE - WINDCLIFF ROAD
WINDCLIFF SUBDIVISION
RODGER & SYLVIA BROWN
LAKE CITY, MINNESOTA

DRAWN: JPP
 CHECKED: RAW
 DATE: 09/25/03
 H. SCALE: 1" = 50'
 V. SCALE: 1" = 10'
 SHEET
6 of 12

PROJ. # 02253